

## 2 3/8 X .190

X 33' A53 GR B/C,  
SECONDARY, TUBING

## 2 3/8 X .154

A106 GR B, SEAMLESS,  
FBE, IMP, SOME MTRS

## 2 7/8 X .190

X 33' 6.5# SECONDARY,  
TUBING

## 2 7/8 X .217

X 31.5' SECONDARY  
TUBING

## 2 3/8 X .218

SEAMLESS, A106 A53 API,  
SURPLUS, ARO/FBE

## 3 1/2 X .216

ERW, SURPLUS,  
FBE, BXB

## 4 1/2 X .250

X 45' GR B,  
SURPLUS

## 6 X .250

SURPLUS ERW  
BARE, SQXSQ 0-1 RW

## 6 X .188

SURPLUS ERW  
BARE, SQXSQ

## 10 3/4 X .250

API5L X52, SURPLUS,  
ARO, BXB

## 10 3/4 X .500

ERW, SURPLUS, ARO/FBE,  
MIXED ENDS, 0-1 MW

## 12 3/4 X .375

ERW, SURPLUS, ARO/FBE,  
MIXED ENDS, 0-1 MW

## 12 3/4 X .500

ERW SURPLUS,  
ARO/FBE

## 24 X .375

ERW API 5L X65, BARE,  
M&M DOM, BXB, MTRS

## 26 X .312

USED ERW BARE/BLK RESIDUE  
HVY PITTING, BXB, 0-1 MW

## 30 X .429

SURPLUS SPIRALWELD  
BARE, SCALING, MIXED ENDS

## 34 X .281

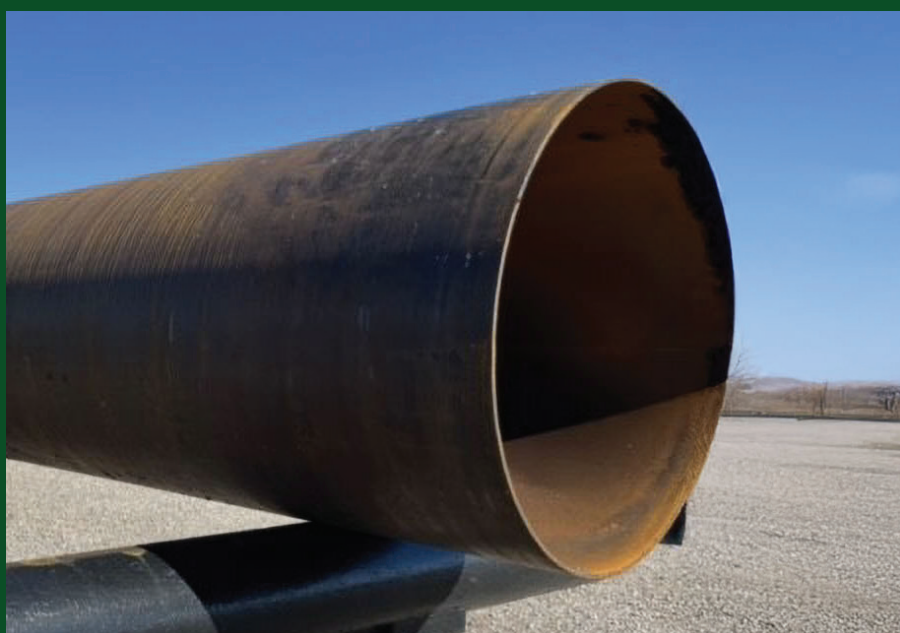
USED #1 & #2 X52  
CLEANED BARE 0-2 MW

## 34 X .438

API 5L X65 ARO/FBE,  
DOM, BXB, MTRS

## 48 X .406

#1 USED SPIRALWELD API 5L X42,  
CLEANED BARE 0-2 MW  
W/ LAB TESTS



INDUSTRIES  
& APPLICATIONS:

CONSTRUCTION • INFRASTRUCTURE • MARINE APPLICATIONS • PILING  
DEWATERING • DREDGING • HYDROELECTRIC & WATER TRANSMISSION  
EXCAVATION • IRRIGATION & WATER WELLS • MINING  
TUNNELING & ROAD BORING • SIGN & FLAG POLES